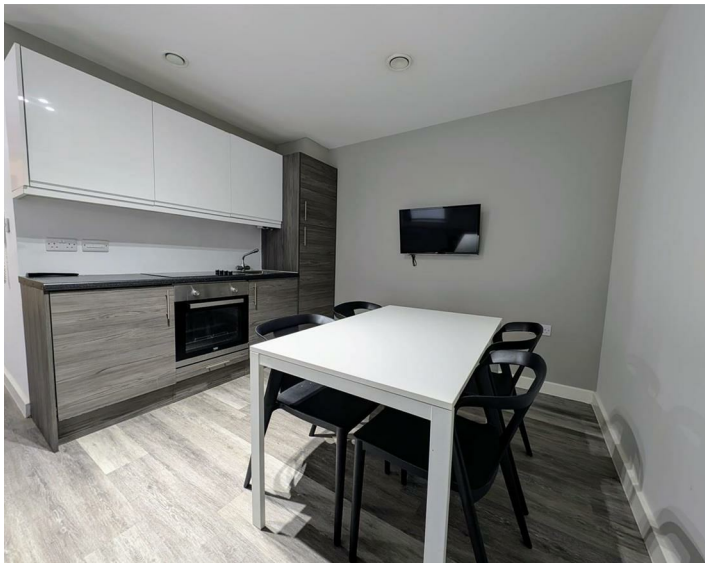




Apt 40 4 Leigh Street, Liverpool, L1 1NT  
£675 Per Month

www.  
cityresidential  
.co.uk



About the Property

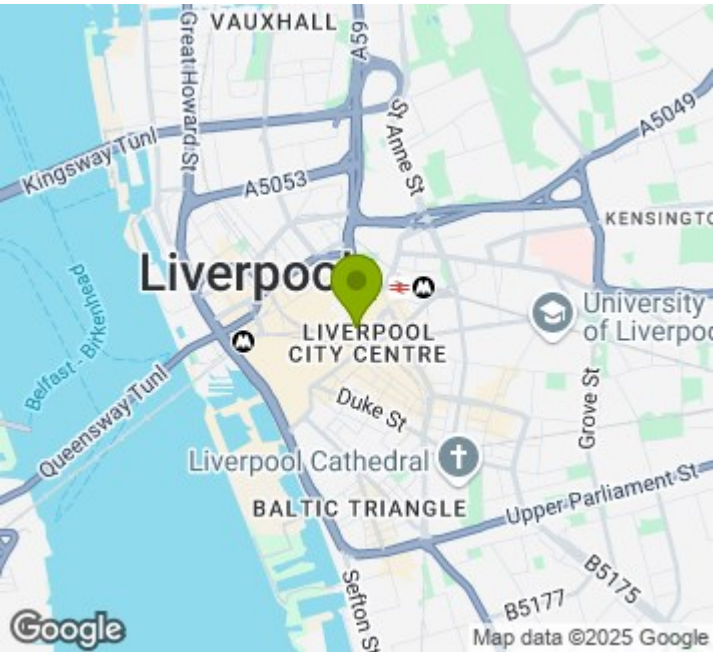
Available Now!!

This well-presented studio apartment in the heart of Liverpool City Centre. Situated on Leigh Street, it is ideally located for all the amenities the city centre has to offer and is just a short walk from both Liverpool Central and Liverpool Lime Street Stations. The property is available on a fully furnished basis. The accommodation further benefits from double glazing and integrated white goods in the kitchen.

This development is serviced by a lift to all floors and there is no parking available with this property.

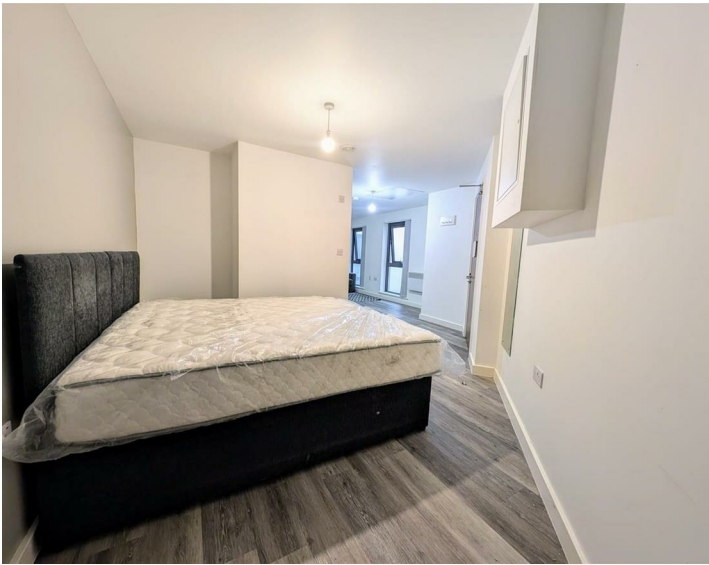
We expect high demand for this stunning property, therefore early viewing is strongly advised. Contact City Residential today on 01512316100!!

- Studio Apartment
- Fully Furnished
- No Parking
- Available Now
- Amazing Location
- EPC Rating - C
- Council Tax Band - A
- Deposit Payable £778



Energy Efficiency Rating

	Current	Potential
Very energy efficient - lower running costs		
(92 plus) A		
(81-91) B		
(69-80) C	74	74
(55-68) D		
(39-54) E		
(21-38) F		
(1-20) G		
Not energy efficient - higher running costs		
England & Wales	EU Directive 2002/91/EC	



City Residential  
81/87 Victoria Street, The Old Haymarket, Liverpool L1 6DG  
T: 0151 231 6100 F: 0151 231 6105  
E: sales@cityresidential.co.uk



WWW.  
cityresidential  
.co.uk